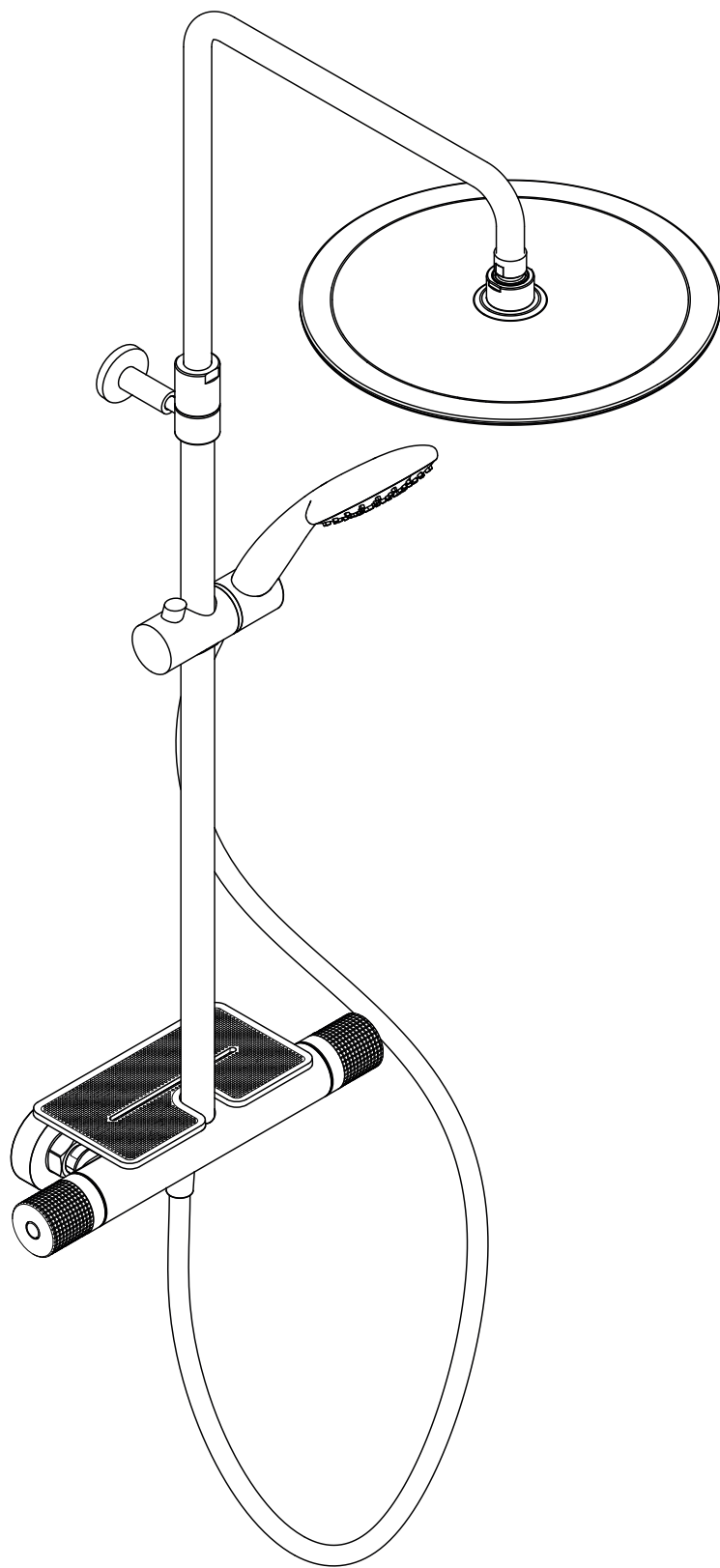
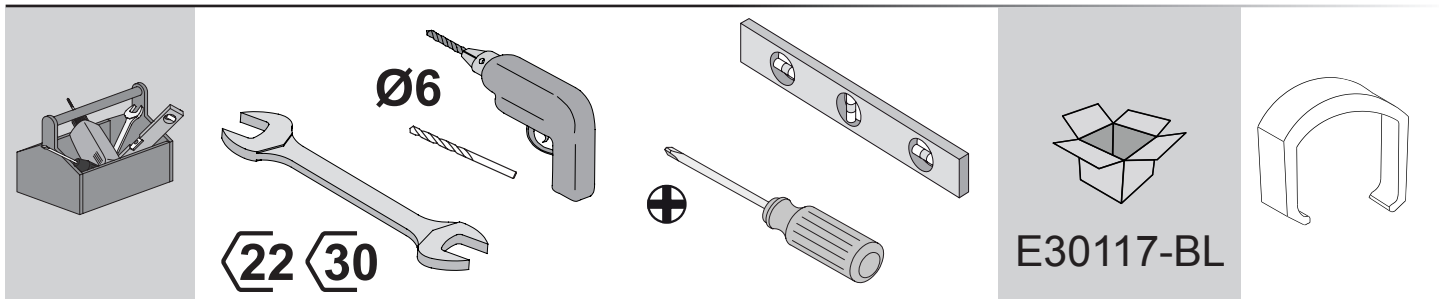


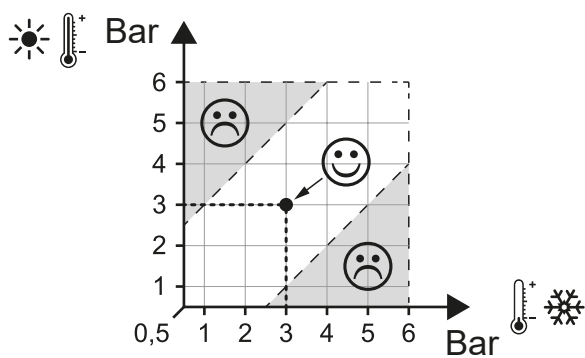
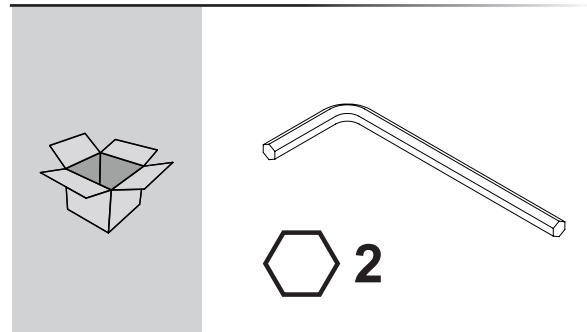
Jacob Delafon



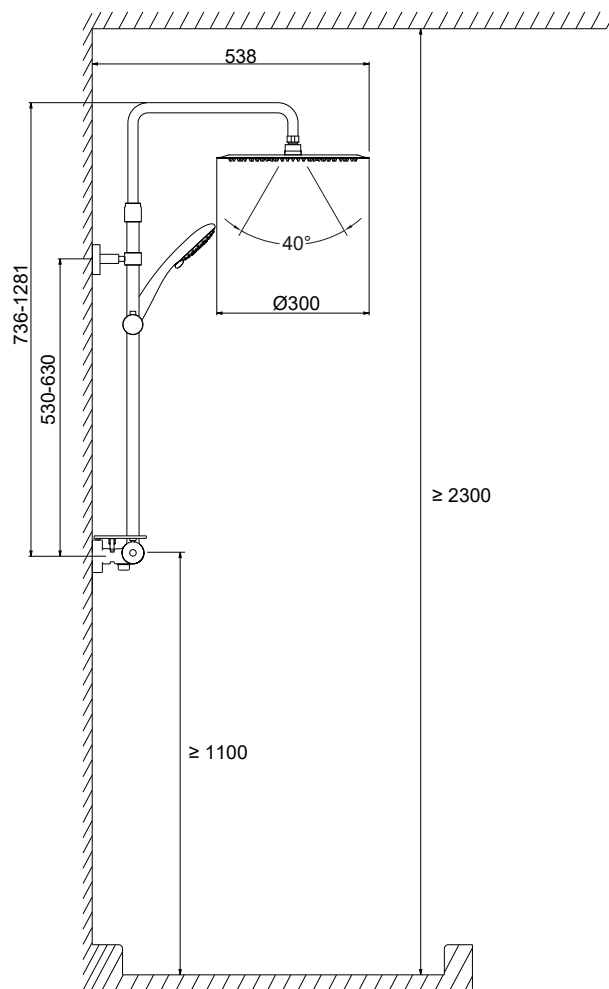
RIVOLI



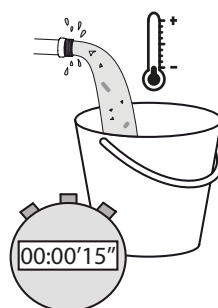
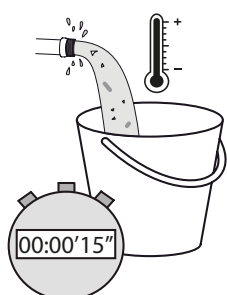
	Bar	$0.5 < 3 < 6$
	°C	$55 < 60 < 65$



E30117-**



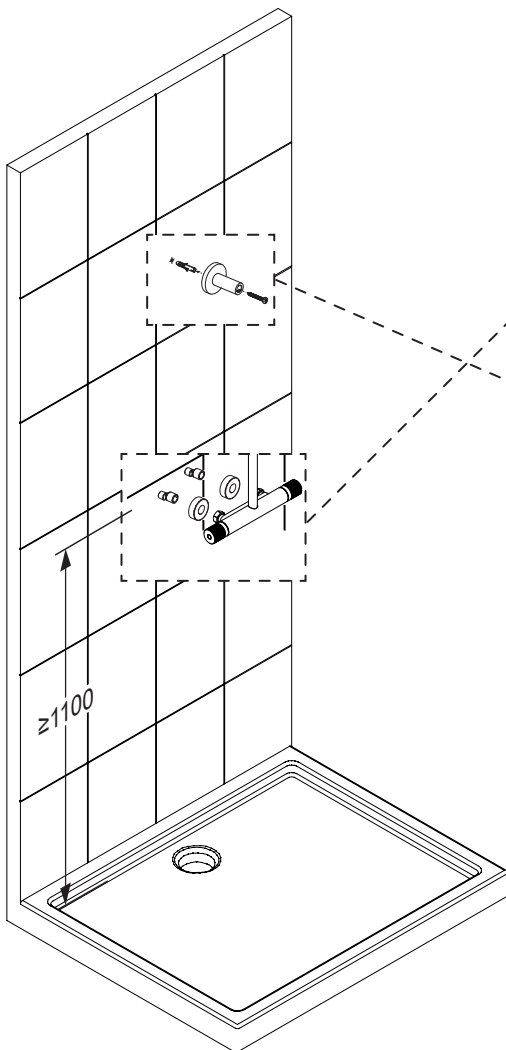
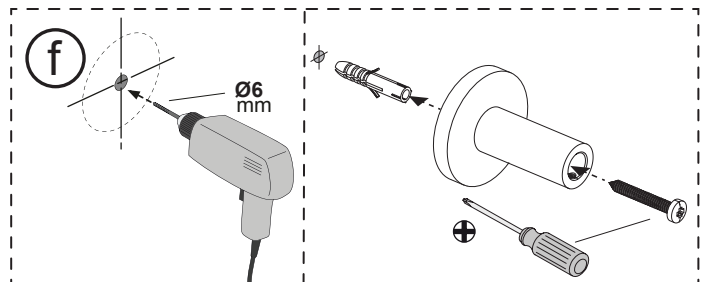
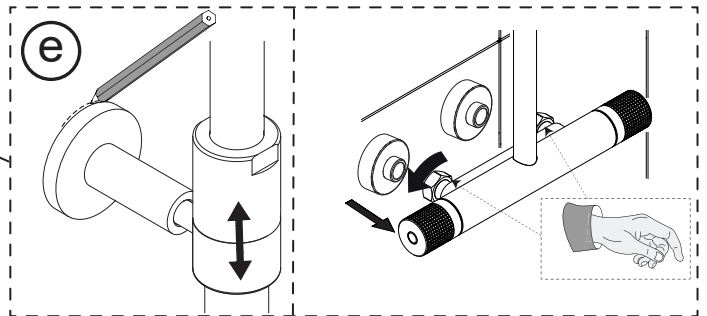
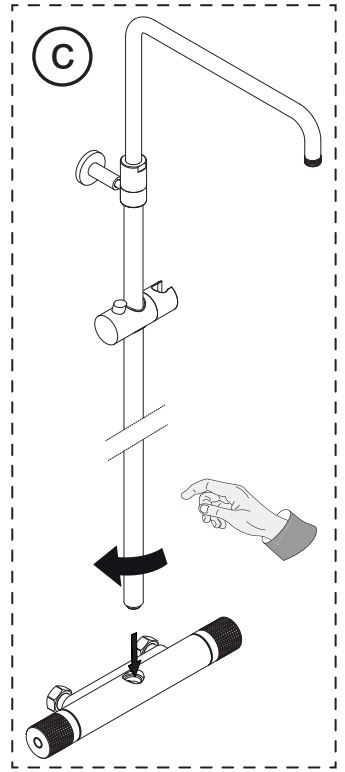
1



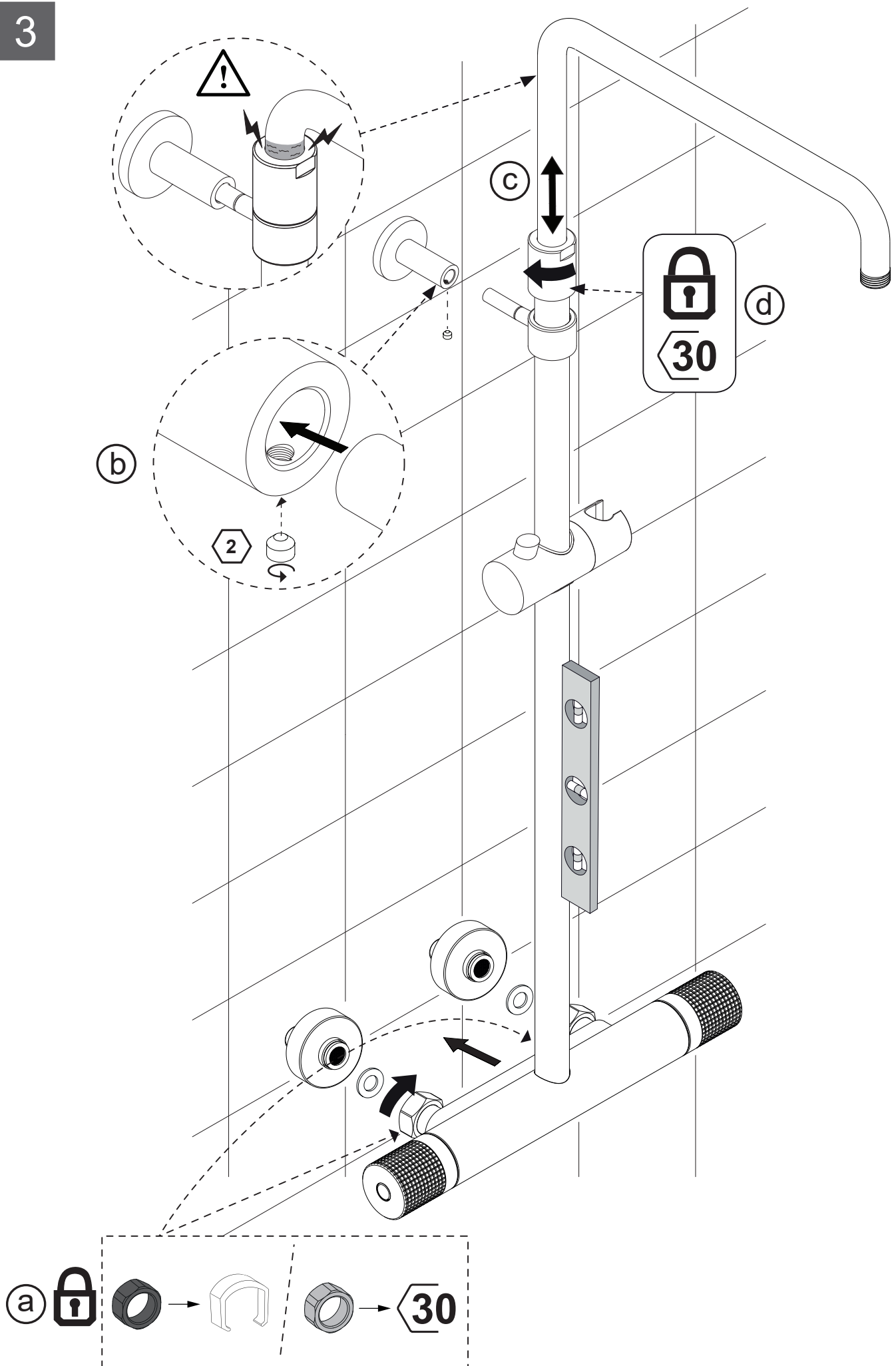
2

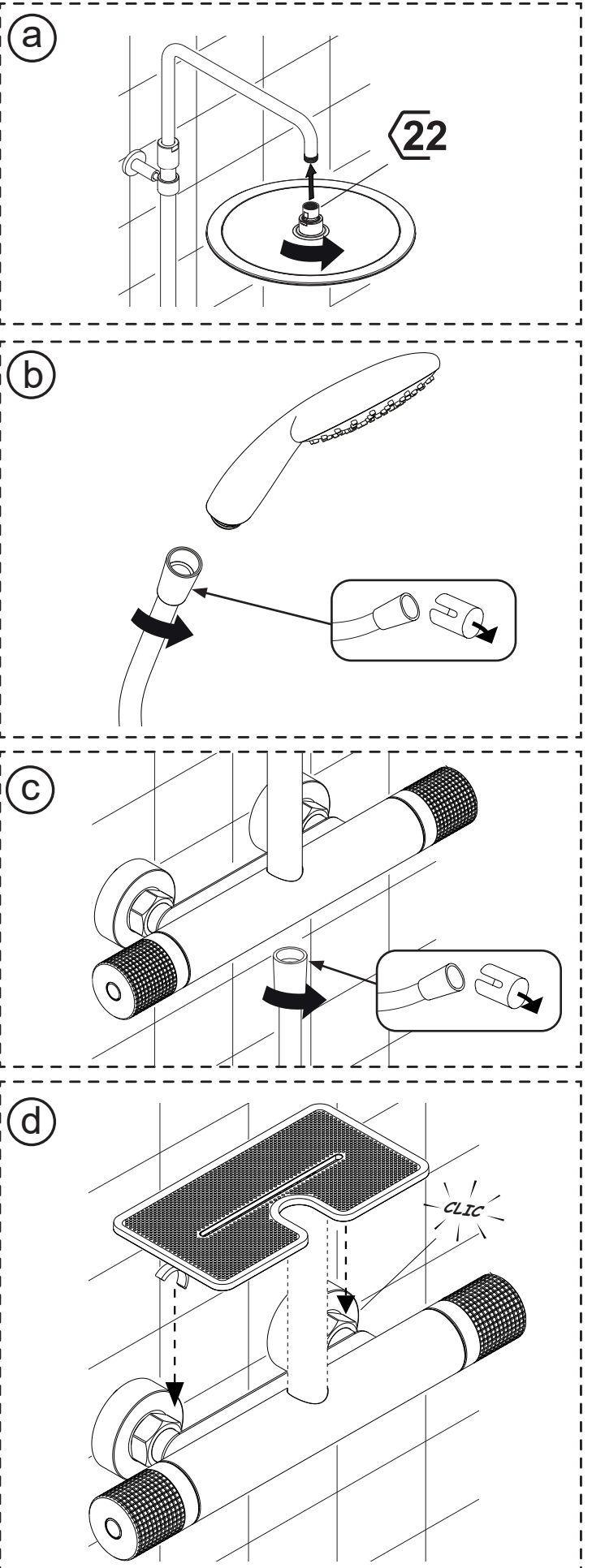
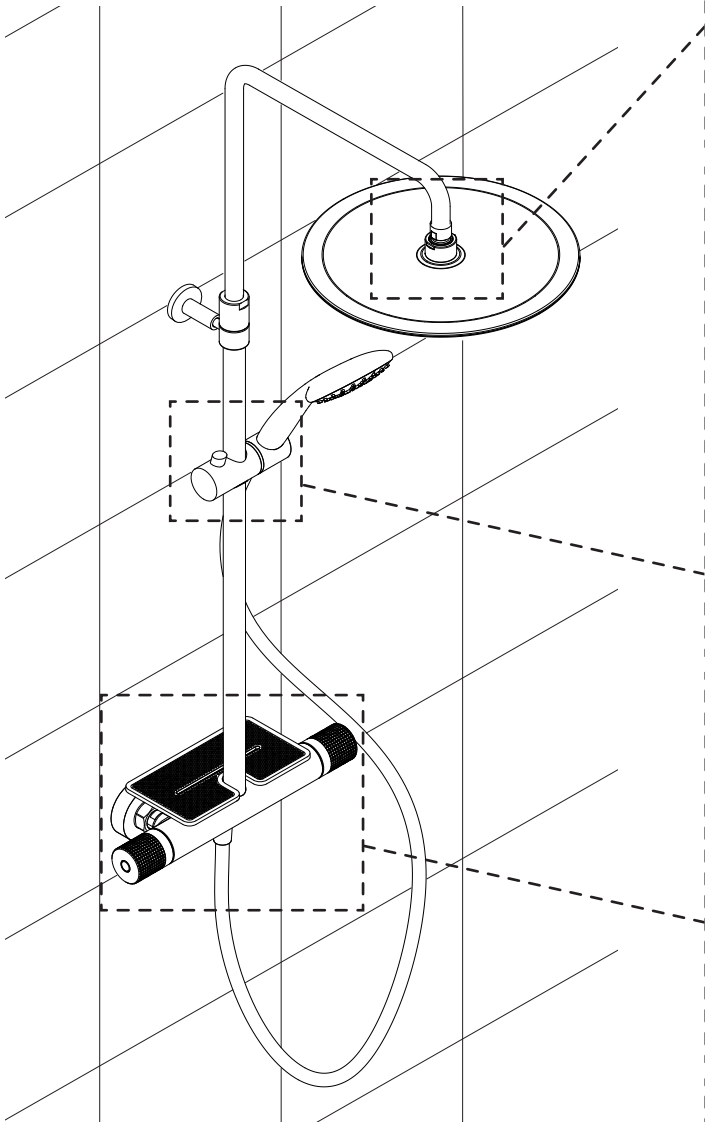
Diagram illustrating the second step of the installation process:

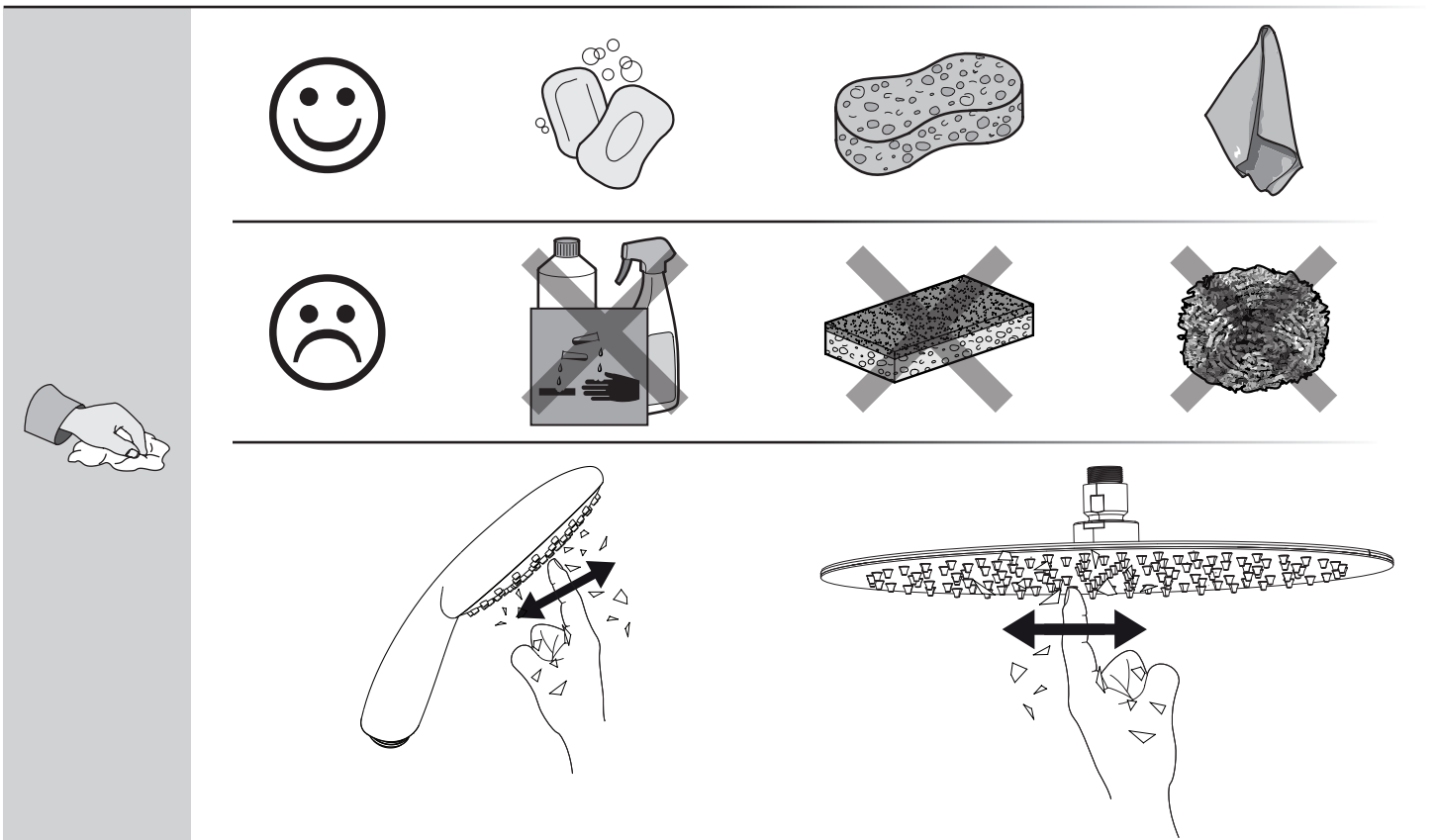
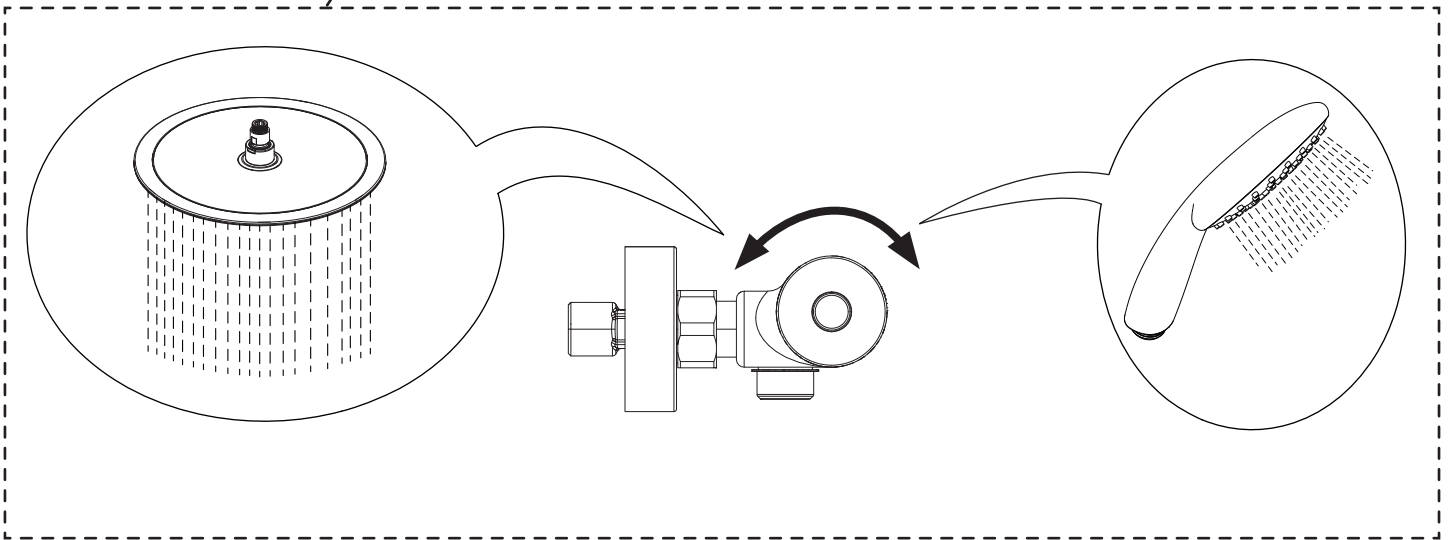
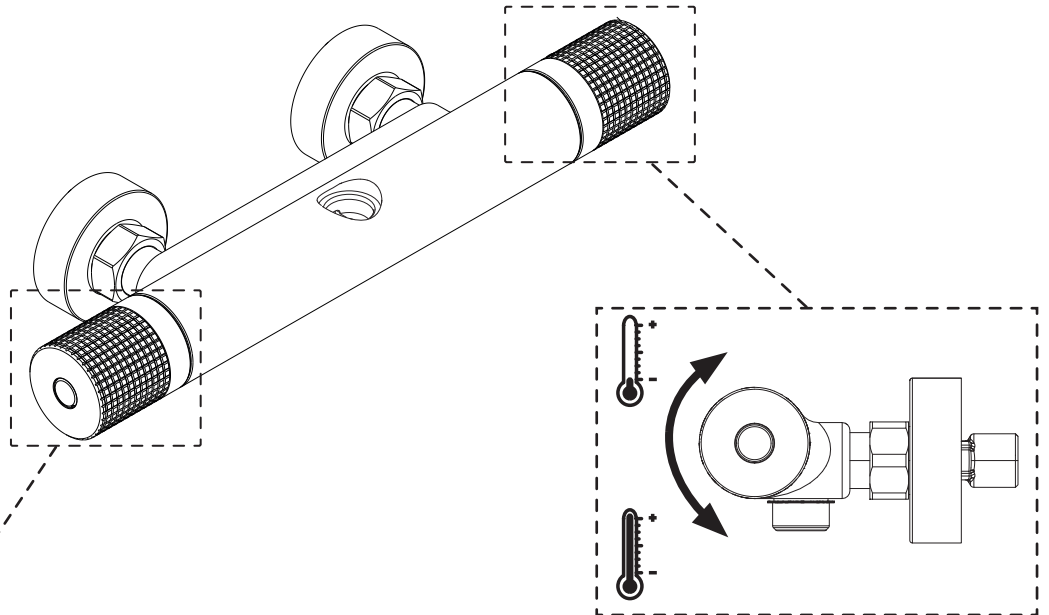
- A horizontal level is shown being attached to a wall.
- A callout shows a ball of twine being used to secure the level.
- Dimensions are given: 25-30 mm for the twine diameter and 150 mm for the distance between the twine loops.
- Warning symbols (exclamation mark and thermometer) indicate to avoid overheating and to use caution.
- A dashed box labeled 'i' contains two sub-diagrams showing the correct (25mm) and incorrect (30mm) twine diameters for the mounting hardware, with a smiley face for the correct size and a sad face for the incorrect size.

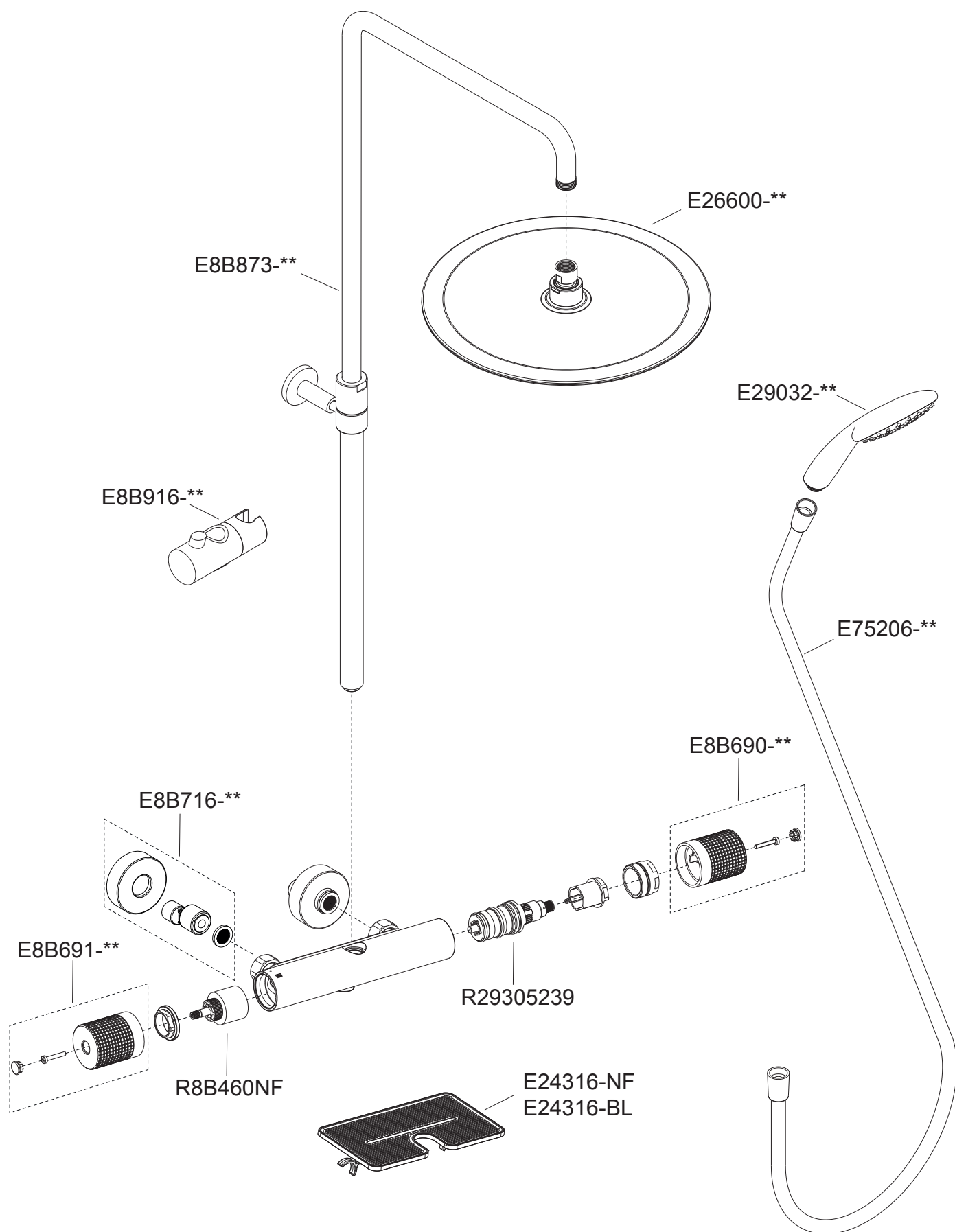


3









Jacob Delafon

